

GAPDH Mouse Monoclonal Antibody

Catalog Number: AT004

Product Package

Cat. No.	Unit Size	Concentration	Storage
AT004	100 μ L	1 mg/mL	Short term: 4°C Long term: -20°C Avoid freeze/thaw cycle

Introduction

Glyceraldehyde 3 phosphate dehydrogenase (GAPDH) is well known as one of the key enzymes involved in glycolysis. GAPDH is constitutively abundant expressed in almost cell types at high levels, therefore antibodies against GAPDH are useful as loading controls for Western Blotting. Some pathology factors, such as hypoxia and diabetes, increased or decreased GAPDH expression in certain cell types.

Storage Condition and Buffer: 1 mg/ml in PBS, pH 7.4, containing 0.02% sodium azide and 50% glycerol. Store at +4°C short term. Store at -20°C long term. Avoid freeze / thaw cycle.

Application: WB IHC ICC/IF FC.

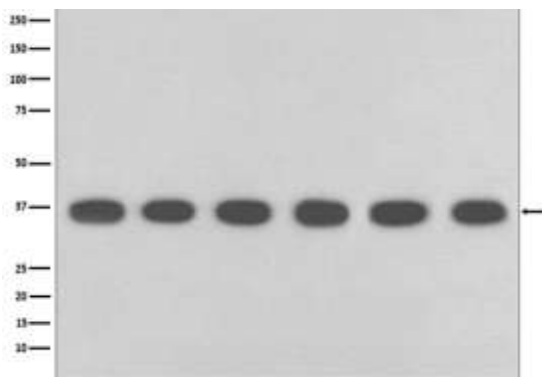
Reactivity: Human Mouse Rat Chicken Monkey Zebra fish

Dilution: WB 1:3000~1:10000 IHC 1:100~1:500 ICC/IF 1:100~1:250 IP 1:50 FC 1:50.

Purification: Affinity-chromatography.

Specificity: GAPDH Mouse Monoclonal Antibody detects endogenous levels of total GAPDH Mouse Monoclonal.

Immunogen: A synthesized peptide derived from human GAPDH Mouse Monoclonal.



Western blot analysis of (1) HeLa, (2) Jurkat whole cell lysates, (3) Mouse kidney lysates, (4) Mouse spleen lysates, (5) RAW 264.7 whole cell lysates, (6) Rat brain lysates with GAPDH Mouse Monoclonal Antibody

For Research Use Only. Not For Use In Diagnostic Procedures.
www.abpbiotech.com.cn