

β -Tubulin Rabbit Monoclonal Antibody

Catalog Number: AT005

Product Package

| Cat. No. | Unit Size | Concentration | Storage |
|----------|-------------|---------------|--|
| AT005 | 100 μ L | 1 mg/mL | Short term: 4°C Long term: -20°C Avoid freeze/thaw cycle |

Introduction

Tubulin is the major constituent of microtubules. It binds two moles of GTP, one at an exchangeable site on the beta chain and one at a non-exchangeable site on the alpha-chain

Storage Condition and Buffer: 1 mg/ml in PBS, pH 7.4, containing 0.02% sodium azide and 50% glycerol. Store at +4°C short term. Store at -20°C long term. Avoid freeze / thaw cycle.

Application: WB IHC ICC/IF.

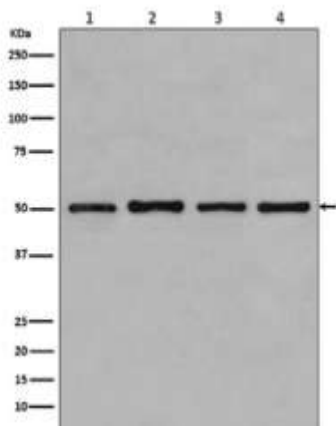
Reactivity: Human Mouse Rat.

Dilution: WB 1:3000~1:10000 IHC 1:50~1:200 ICC/IF 1:50~1:200 FC 1:100.

Purification: Affinity-chromatography.

Specificity: beta Tubulin Antibody detects endogenous levels of total beta Tubulin.

Immunogen: A synthesized peptide derived from human beta Tubulin.



Western blot analysis of beta Tubulin expression in (1)MCF-7 cell lysate; (2)COS-1 cell lysate; (3)Jurkat cell lysate; (4)HeLa cell lysates

For Research Use Only. Not For Use In Diagnostic Procedures.
www.abpbiotech.com.cn