

β-Tubulin Mouse Monoclonal Antibody

Catalog Number: AT006

Product Package

Cat. No.	Unit Size	Concentration	Storage
AT006	100 µL	1 mg/mL	Short term: 4°C Long term: -20°C Avoid freeze/thaw cycle

Introduction

Tubulin is the major constituent of microtubules. It binds two moles of GTP, one at an exchangeable site on the beta chain and one at a non-exchangeable site on the alpha-chain

Storage Condition and Buffer: 1 mg/ml in PBS, pH 7.4, containing 0.02% sodium azide and 50% glycerol. Store at +4°C short term. Store at -20°C long term. Avoid freeze / thaw cycle.

Application: WB IHC ICC/IF.

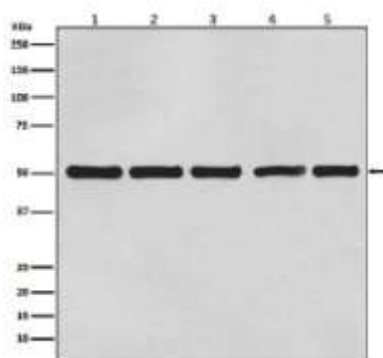
Reactivity: H M R Mk Dg Ch Hm Rb Sh

Dilution: WB 1:3000~1:10000 IHC 1:50~1:200 ICC/IF 1:50~1:200 FC.

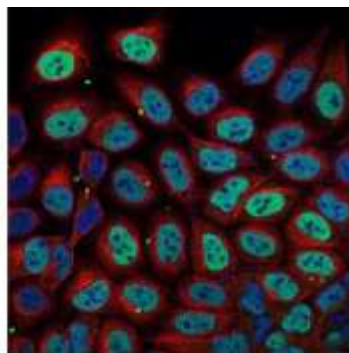
Purification: Affinity-chromatography.

Specificity: beta Tubulin Mouse Monoclonal Antibody detects endogenous levels of total beta Tubulin..

Immunogen: A synthesized peptide derived from human beta Tubulin..



Western blot analysis of beta Actin expression in (1) A431 cell lysate; (2) Rat brain lysate; (3) Mouse kidney lysate; (4) Chicken lung lysate; (5) Hamster spleen lysate with beta Tubulin Mouse Monoclonal Antibody



Immunofluorescent analysis of HeLa cells, using beta Tubulin mAb.

For Research Use Only. Not For Use In Diagnostic Procedures.
www.abpbiotech.com.cn